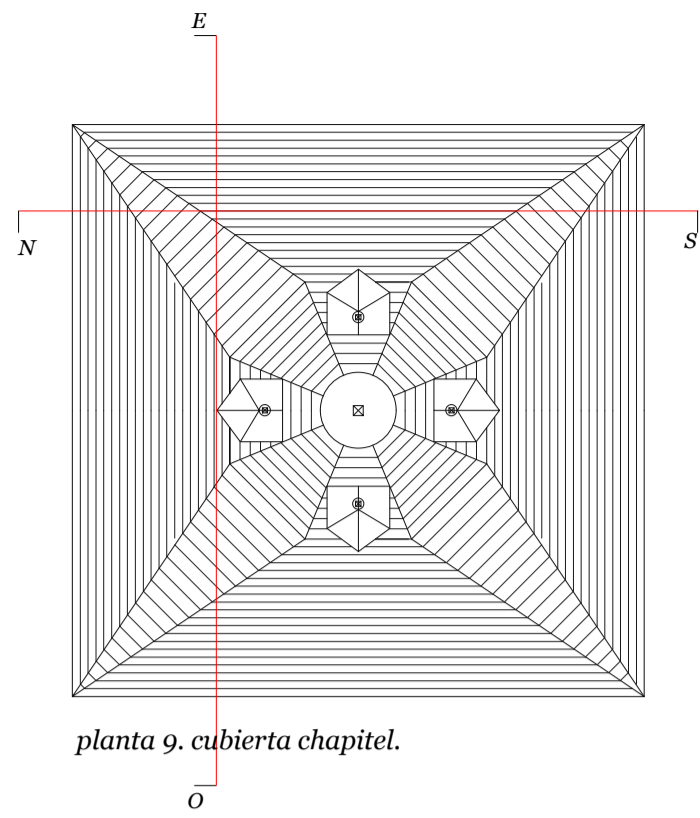
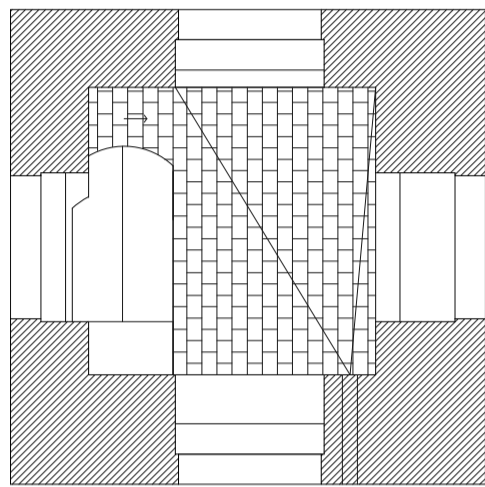


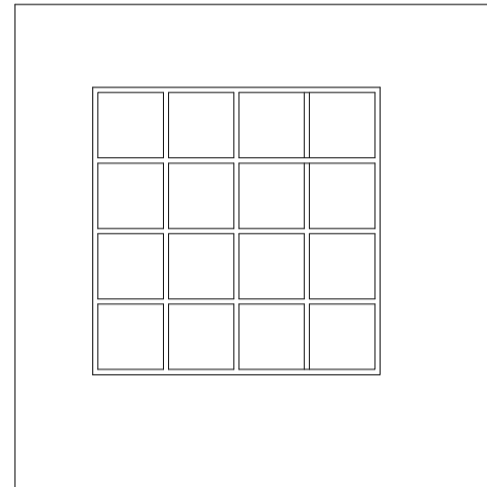
planta 8. base de chapitel.



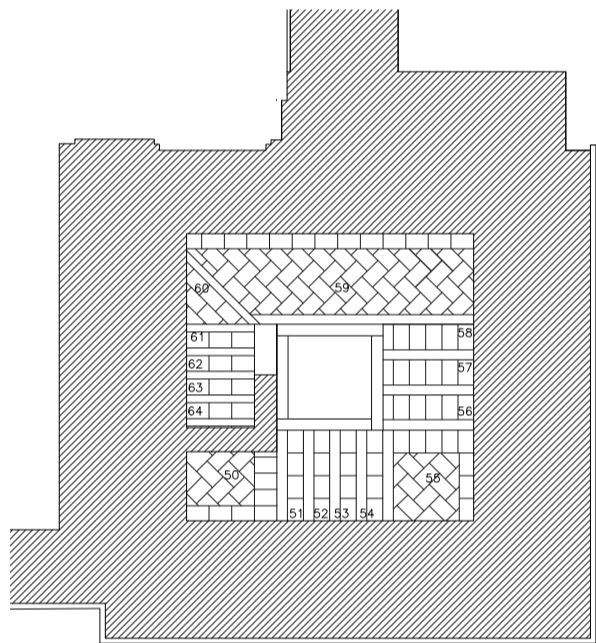
planta 9. cubierta chapitel.



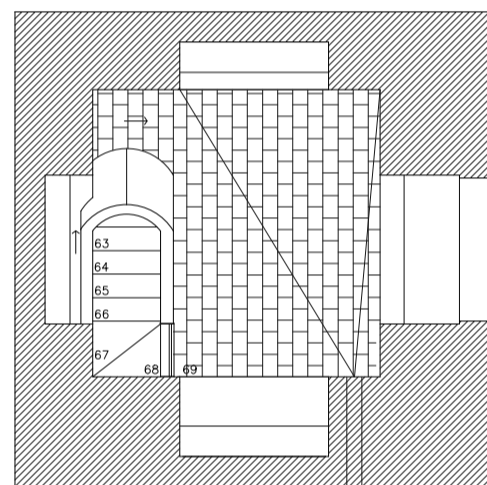
planta 6. campanario



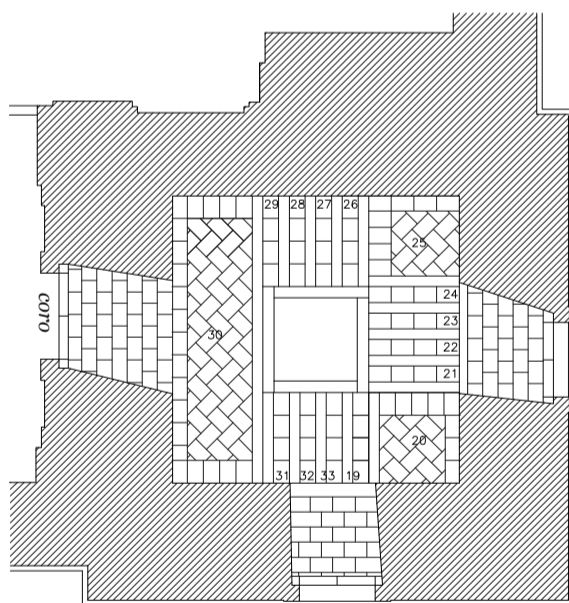
planta 7. cierre metálico chapitel.



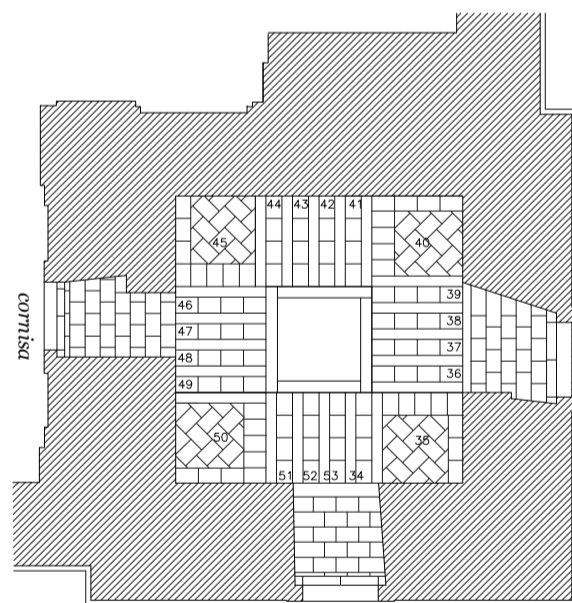
planta 4. escalera campanario



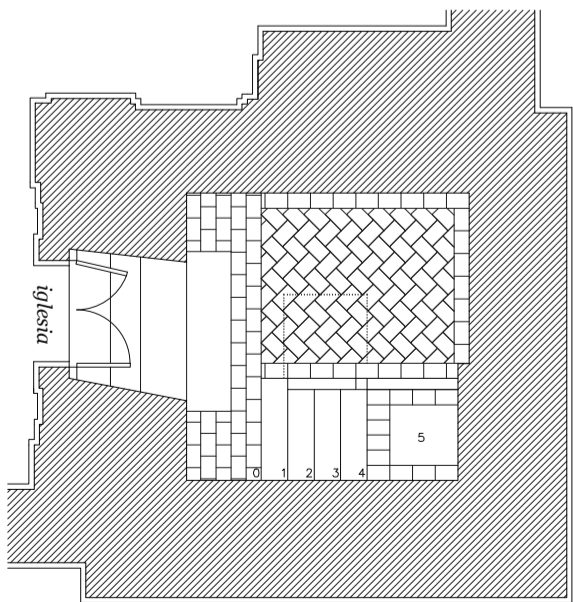
planta 5. desembarco campanario



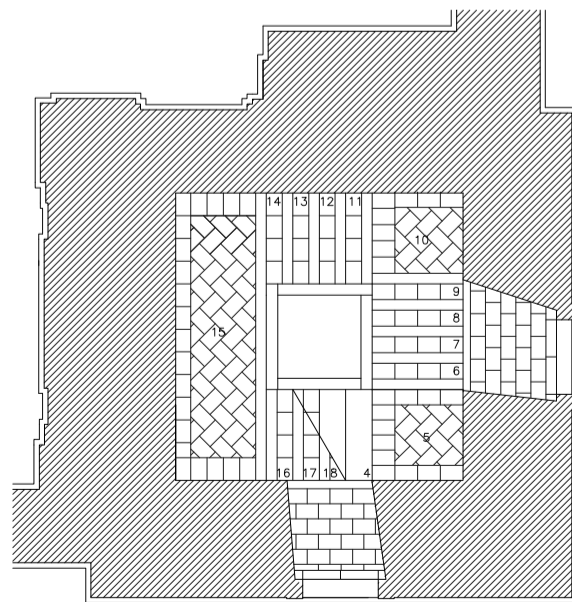
planta 2. acceso a coro. +6.00



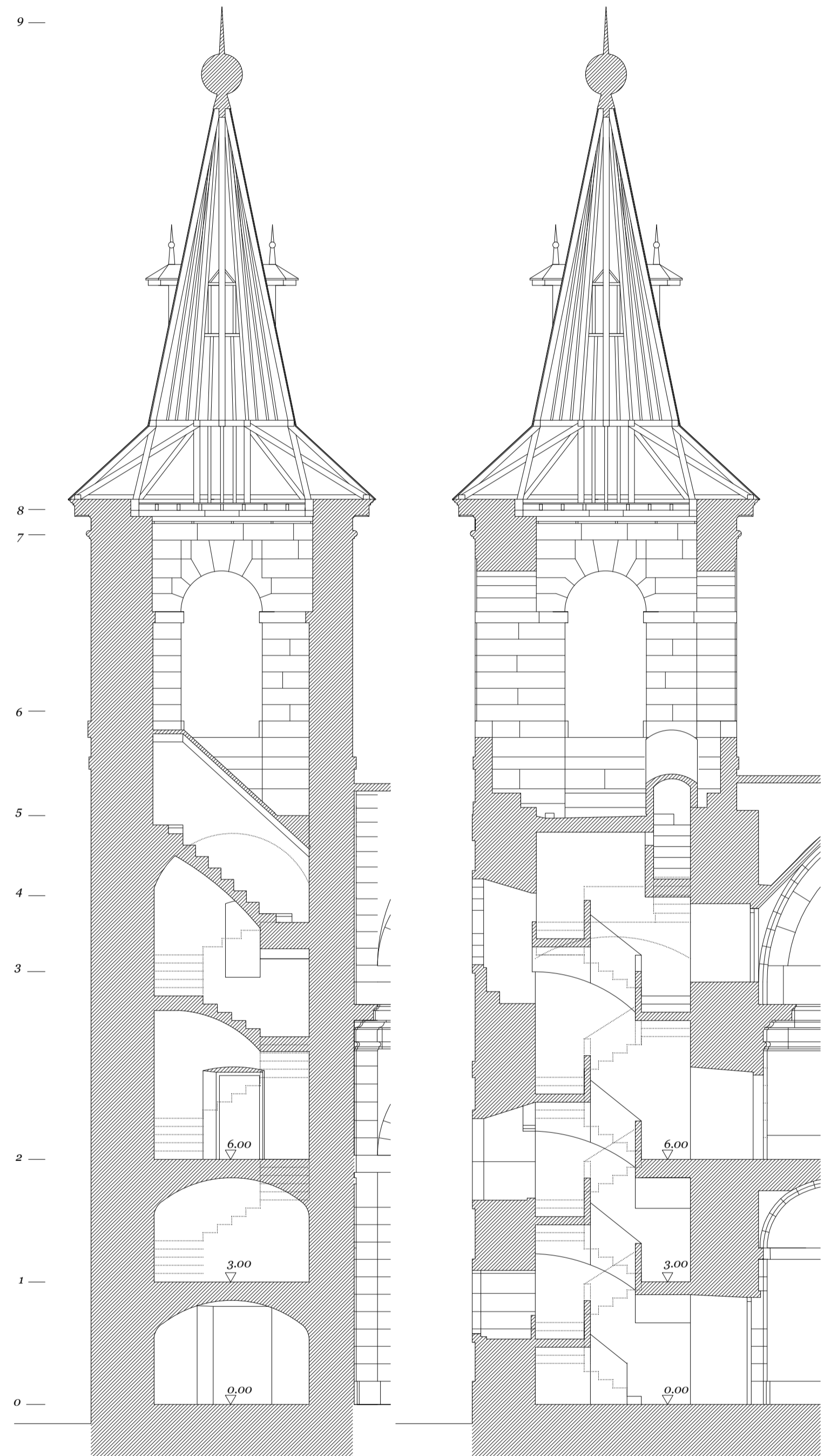
planta 3. acceso a cornisa.



planta 0. acceso a torre 0.00.

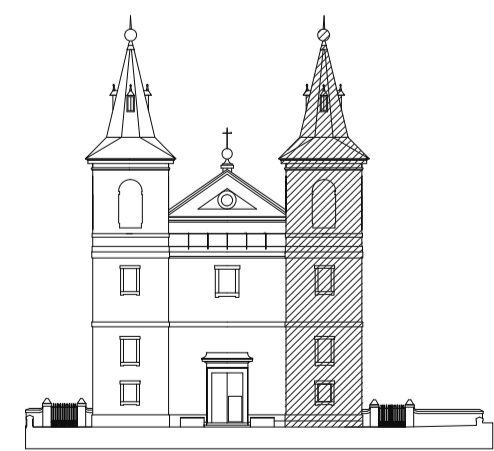


planta 1. +3.00



sección OE

sección SN



PROYECTO DE EJECUCIÓN

RESTAURACIÓN DE LAS TORRES DE LA IGLESIA DE SAN BERNABÉ. EL ESCORIAL. MADRID
DIRECCIÓN GENERAL DE PATRIMONIO · OFICINA DE CULTURA Y TURISMO · COMUNIDAD DE MADRID

octubre 2015

consuelo martorell aroca, arquitecta

